



Application

- To transfer clean water or waste water with liquid temperature between 0°C and 40°C
- Application in water supply and drainage for factories, mines, municipal facilities as well as field irrigation, ect

Features

- All new design with ergonomic feature
- Reliable 4-stroke gasoline engine with low fuel consumption and high quality crankshaft
- Portable, durable and compact pump frame
- Durable sealing system with special mechanical seal
- Optional outlet selection

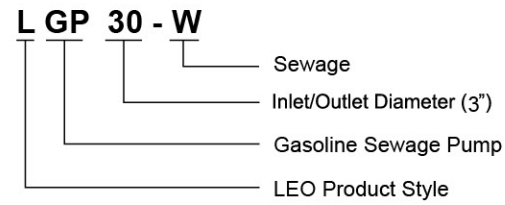
Pump

- Anti-rust cast iron impeller and diffuser
- Max.suction: 5 m
- Inlet/outlet: 3"
- Max. diameter of particle: 22 mm

Engine

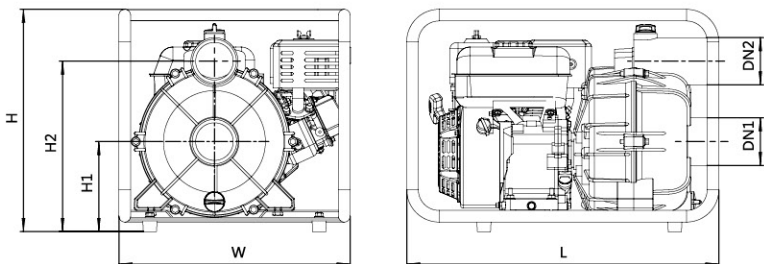
- Single cylinder,4-stroke,Air-cooled
- Max.power: 6.5 HP
- Displacement: 196 cc
- Rated speed: 3600 rpm

Identification Codes



Technical Data

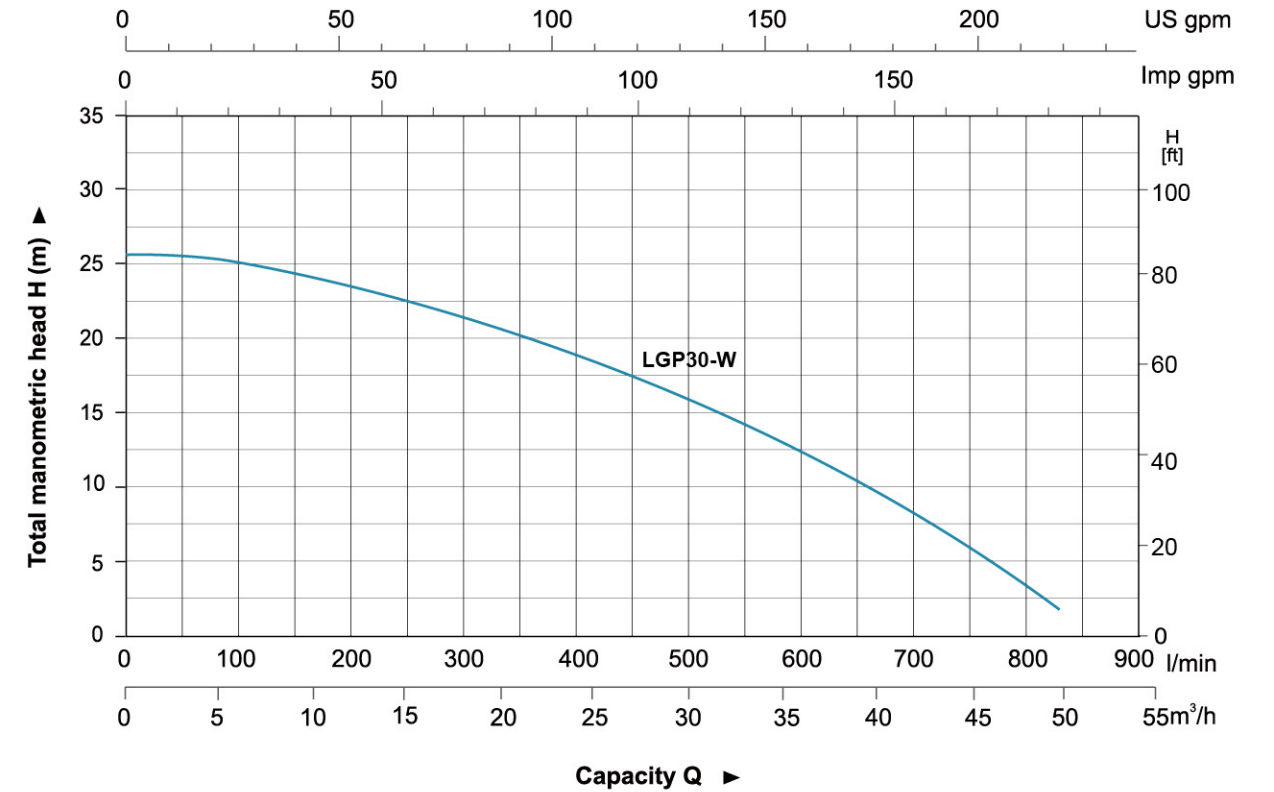
MODEL	POWER HP	Q (m³/h) Q (l/min)	H (m)												
			0	5	10	15	20	25	30	35	40	45	50	55	60
LGP30-W	6.5	H (m)	25.9	25.3	24.1	22.8	21.2	18.8	16.1	13.2	9.6	6.1	2.1	—	—



Dimension

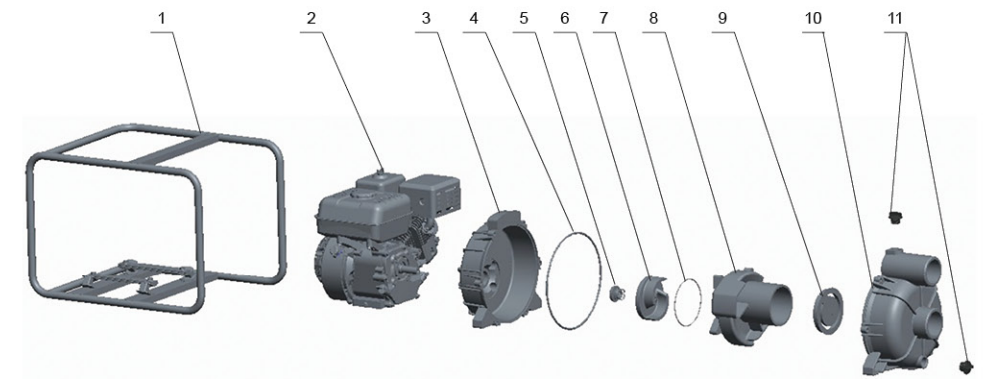
Model	DN1	DN2	L (mm)	W (mm)	H (mm)	H1 (mm)	H2 (mm)
LGP30-W	3"	3"	540	427	420	225	378

Hydraulic Performance Curves



Materials Table

No.	Part	Material
1	Frame	Steel
2	Engine	
3	Pump cover	Aluminum
4	O-ring	NBR
5	Mechanical seal	Carbon/Ceramic
6	Impeller	HT200
7	O-ring	NBR
8	Diffuser	HT200
9	Non-return valve	NBR
10	Pump body	Aluminum
11	Plug	ABS



Package Information

Model	GW (Kgs)	L (mm)	W (mm)	H (mm)	Quantity (PCS/20 TEU)
LGP30-W	33.6	615	450	440	235

